

PlexWare 2.0 Installation Guide

THE SOFTWARE PLATFORM PROVIDER



1	Introduction	3
2	Operation Environment.....	3
3	Installation.....	4
3.1	Select Setup language.....	4
3.2	Start up Wizard	4
3.3	License Agreement.....	5
3.4	Input User's Information.....	5
3.5	Specify Installation Directory	6
3.6	Specify Setup Type.....	6
3.7	Start Installation	7
3.8	Finish Installation	7
4	Uninstallation.....	8
4.1	Finish Uninstallation.....	9

1 Introduction

This document describes how to install and uninstall PlexWare. *PlexWare Install Wizard* executes the PlexWare installation.

This wizard creates K-Plex folder in the “Program Files” Folder and then copies all required files to the folder as a default.

All of the dynamic link libraries and required files that are essential to operate PlexWare are registered in the Windows system. Moreover, “PlexWare” folder is created in the “Start Menu” and Plexware shortcut icons are added in the “PlexWare” folder. Shortcut files have the following icons:

Local desktop

Remote desktop

You can start PlexWare desktop by selecting “Local desktop” or “Remote Desktop” from the Windows “Start” menu.

PlexWare Documents are installed in the “Program Files\K-Plex\PlexWare\doc” directory as a default. Please refer to these documents. Documents are Adobe PDF formatted.

2 Operation Environment

The following environment is required to operate PlexWare;

CPU:	Pentium II 400MHz and above, or Celeron 400MHz and above
OS:	Windows98SE, Windows Me, Windows 2000 (Japanese/English version)
Memory:	64MB and above
Capacity of Disc:	10MB and above
Network:	10/100MB and above if using LAN, 56Kbps and above if using Modem (Internet accessible environment)
Communication Protocol:	TCP/IP
Required Software:	Microsoft Internet Explorer 5.0 and above Microsoft Office 2000 Microsoft MS Net Meeting 3.01and above

3 Installation

This chapter describes installation of PlexWare. You can install PlexWare by double clicking the *setup.exe* in “PlexWare” directory in the Installation CD.

If you are PlexWare SDK user, after PlexWare is installed, you can install PlexWare SDK by double clicking *setup.exe* in SDK directory. PlexWare SDK documents are installed in the “Program Files\K-Plex\PlexwareSDK\doc” directory as a default. Please refer to these documents.

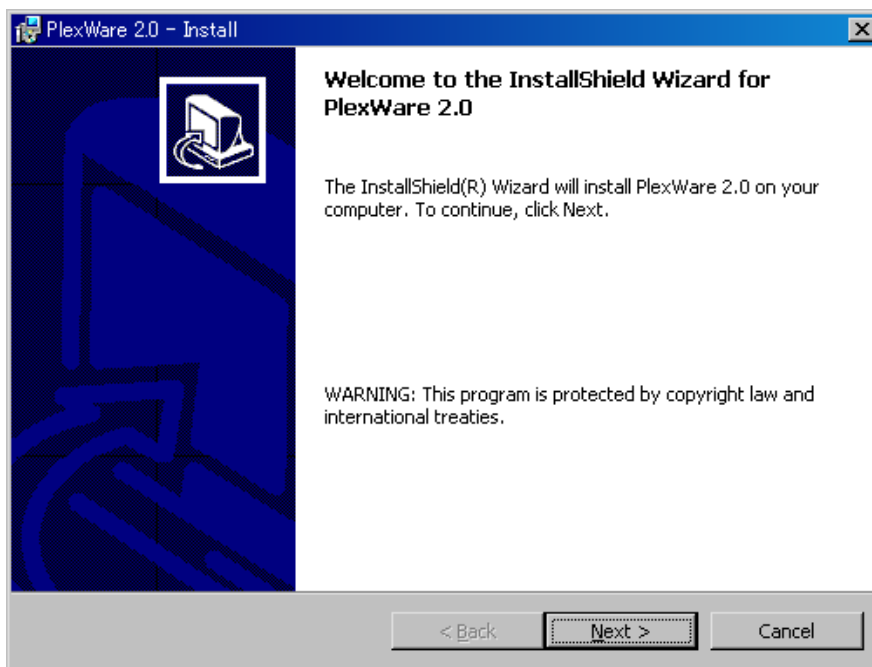
3.1 Select Setup language

Next, the following “Choose Setup Language” dialog appears. Select “English (United States)” and then click the “OK” button.



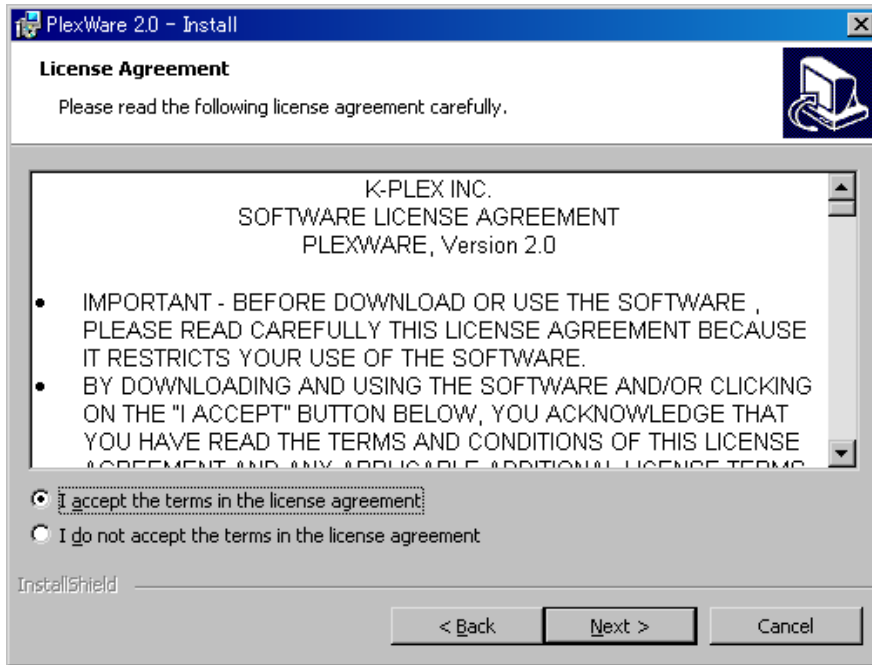
3.2 Start up Wizard

You can continue to install PlexWare by clicking the “Next” button.



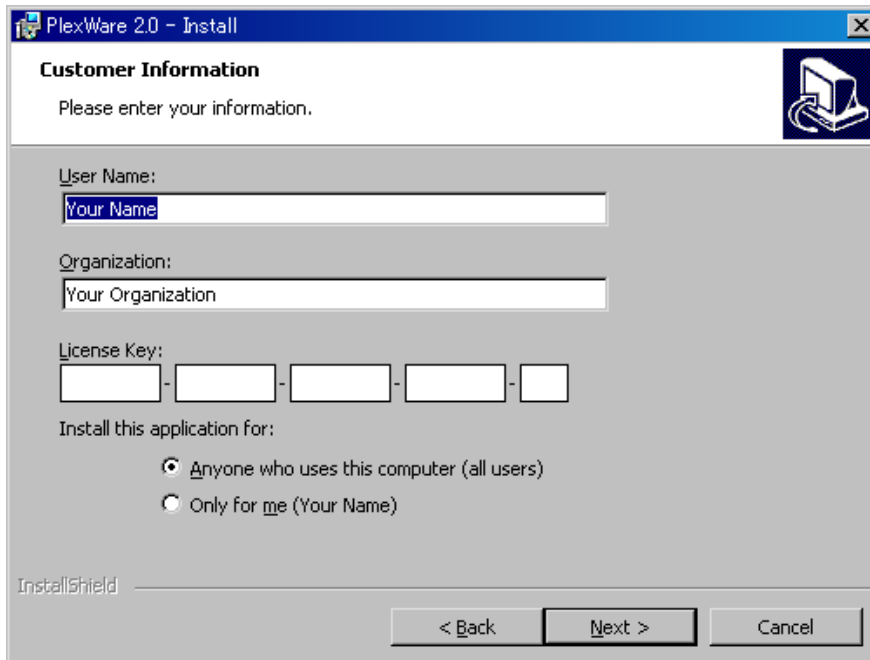
3.3 License Agreement

After reading the following *SOFTWARE LICENSE AGREEMENT*, if you agree with this agreement, click “Next” button.



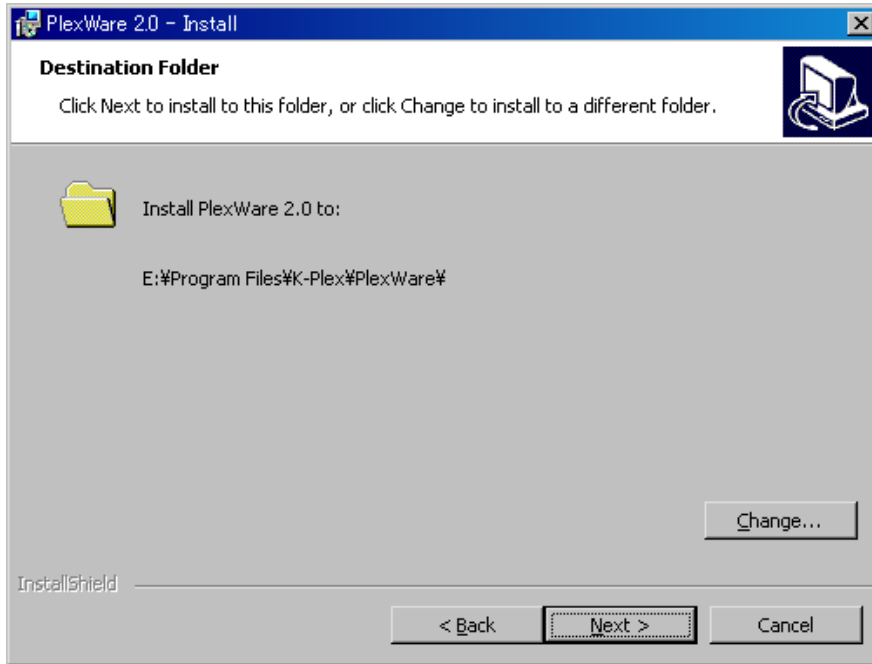
3.4 Input User's Information

Fill in the “User Name”, “Organization” and “License Key” fields and then select for whom this application is installed. Click “Next” button.



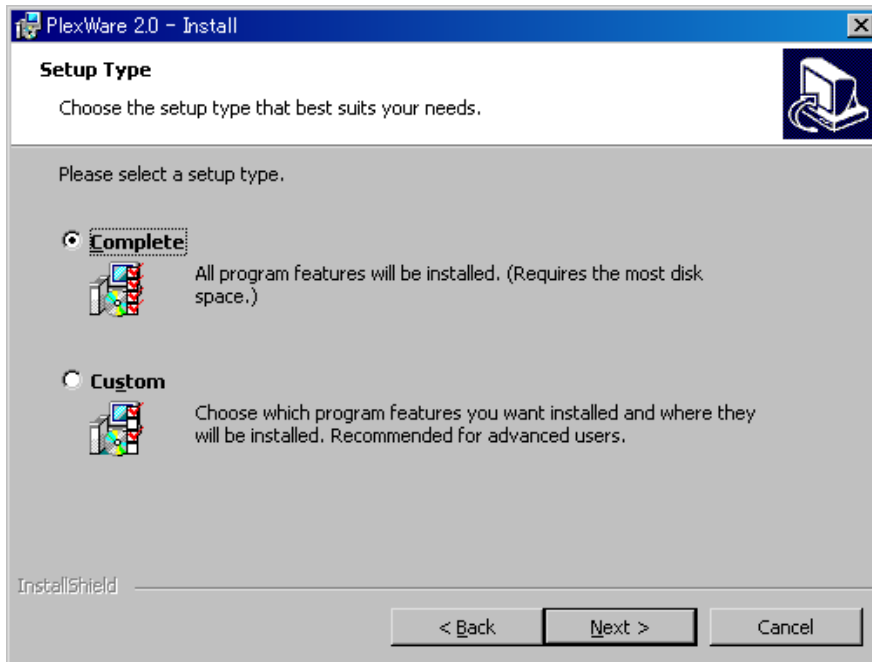
3.5 Specify Installation Directory

If you want to change the default installation directory, click the “Change” button and specify a new installation folder. Then, Click “Next” button.



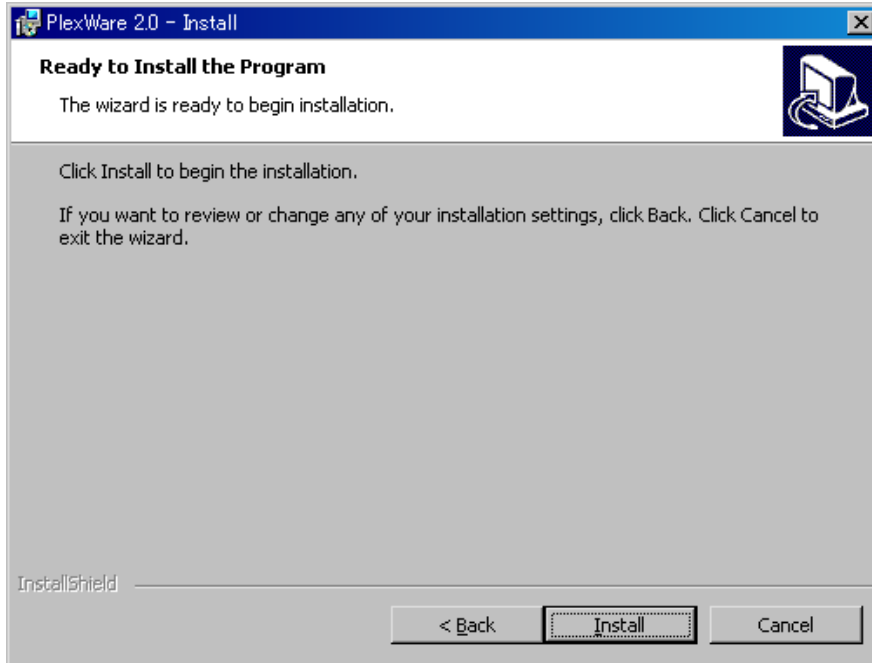
3.6 Specify Setup Type

After selecting “Complete”, click “Next” button.



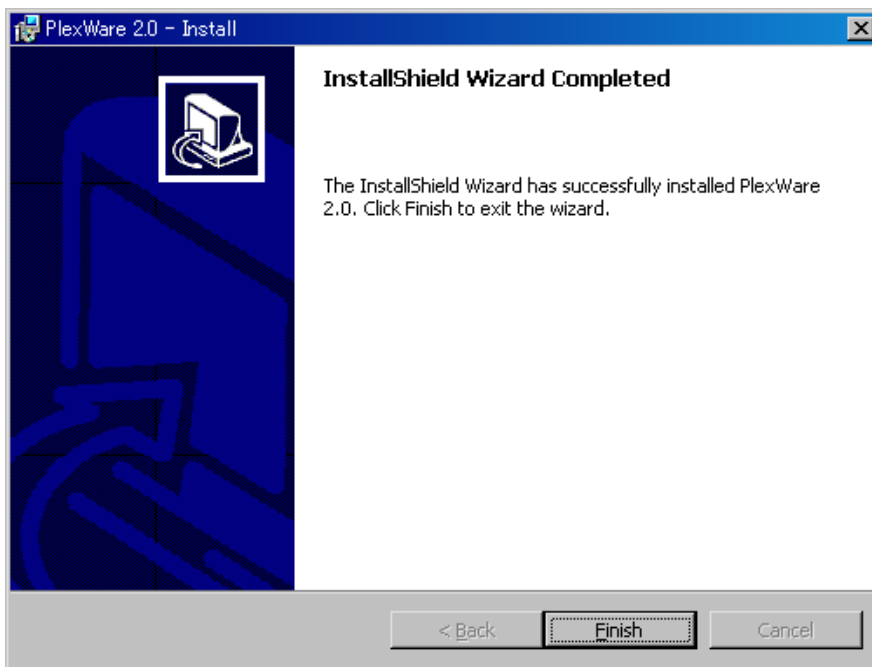
3.7 Start Installation

By clicking “Install” button, you can start installing PlexWare.



3.8 Finish Installation

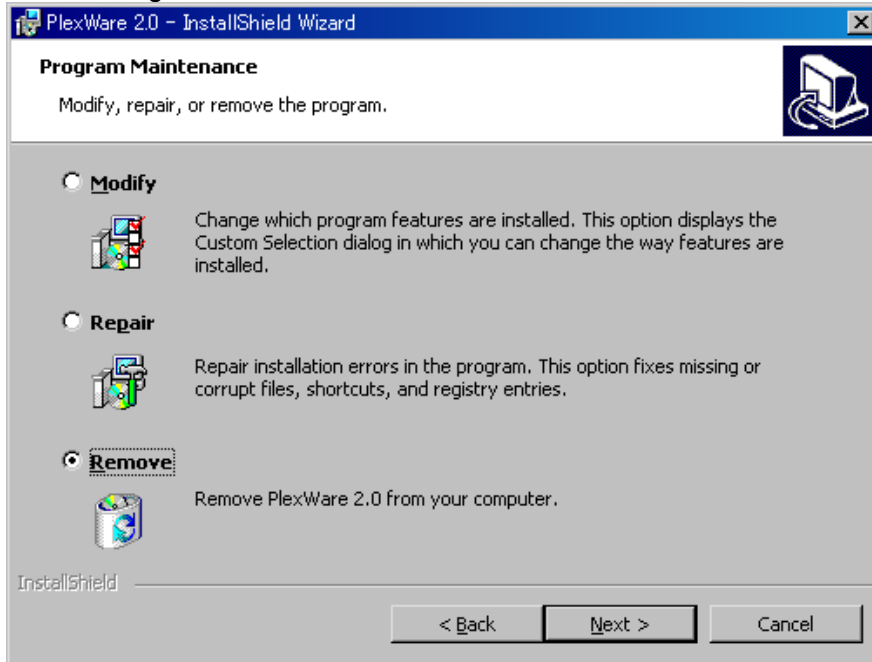
When you click “Finish” button, Installation window closes and finishes PlexWare installation.



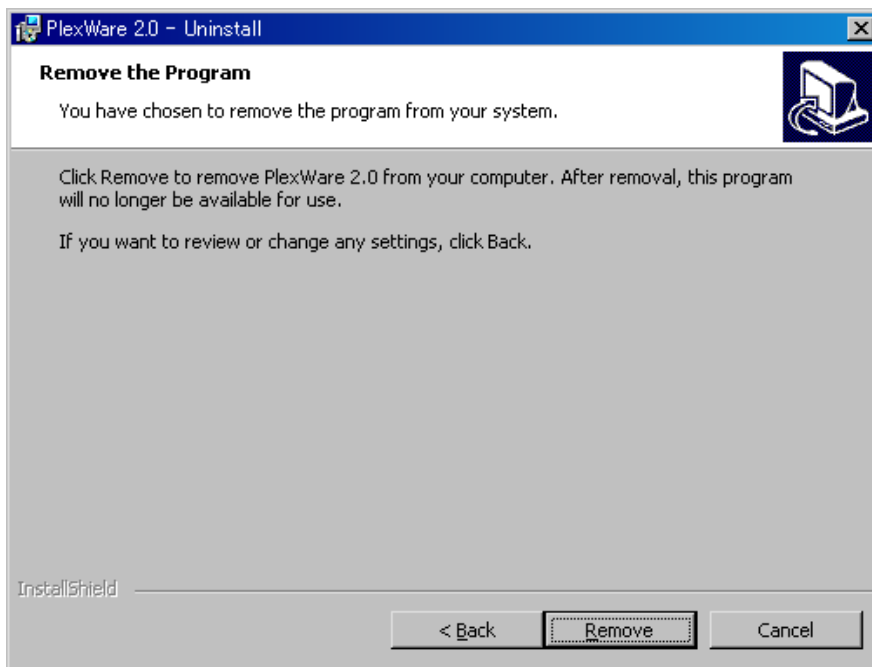
4 Uninstallation

This chapter describes uninstallation of PlexWare. You can uninstall PlexWare by double clicking the *setup.exe* in “PlexWare” directory in the Installation CD.

After selecting “Remove”, click the button “Next”.

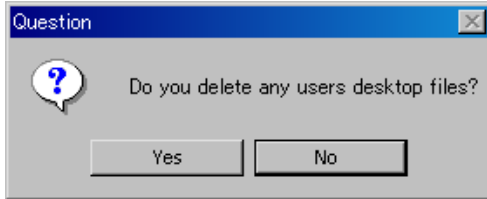


If you confirm to remove PlexWare from your computer, click “Remove” button.



4.1 Finish Uninstallation

If you want to remove saved desktop files from your computer, click “Yes” button. If you want to keep the files, click “No” button.



When you click “Finish” button, Installation window closes and finishes PlexWare uninstallation.

